

Super High Fan Coil 208~230V



Job Name: _____ Date: _____

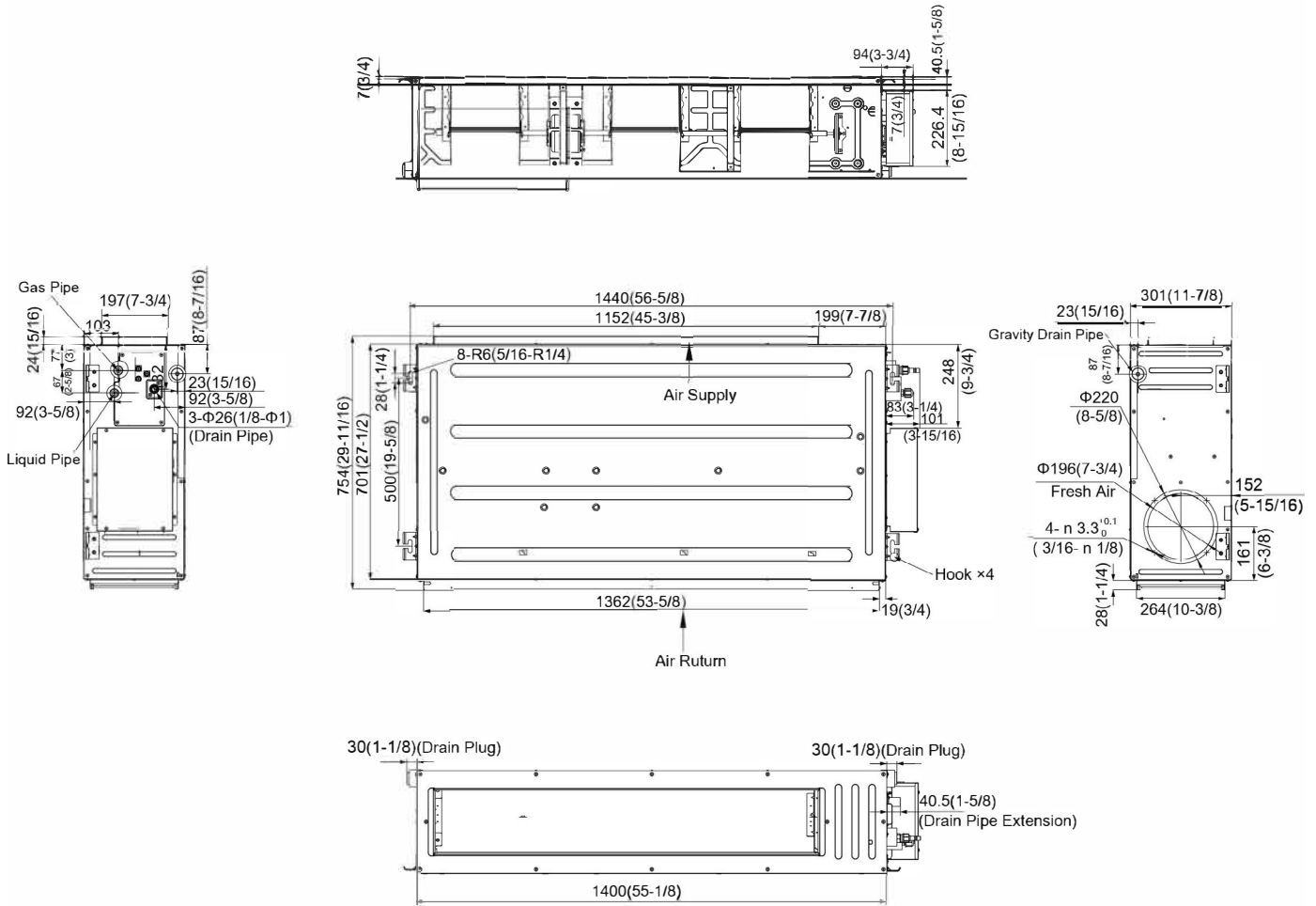
System Reference No.: _____ Engineer Signature: _____

Model: GMV-ND36PHS/B-T(U)



Specifications	Unit	Parameter
Performance		GMV-ND36PHS/B-T(U)
Rated Cooling Capacity	kBtu/h	36.0
Rated Heating Capacity	kBtu/h	40.0
Sound Pressure Level (H/M/L)	dB(A)	45/42/40
Electrical Data		
Power supply	Voltage, Phase, Hertz	208/230, 1, 60
Minimum Circuit Amps (MCA)	A	1.7
Maximum Overcurrent Protection (MOP)	A	15
Fuse	A	15
Fan		
Type x Quantity		Centrifugal x 3
Air Flow Volume (H/M/L)	CFM	1177/942/824
ESP	in.W.G.	0~0.8
Fan Motor Running Current	A	1.2
Fan Motor Power Input	W	350
Refrigerant Piping		
Connection Pipe	Gas (inch)	5/8
	Liquid (inch)	3/8
Connection Method		Brazing Connection
Refrigerant		R410A
Dimension/Weight		
Dimensions (WxDxH)	inch	55-1/8 x 27-9/16 x 11-13/16
Net Weight	lbs	121
Other		
Safety Certification		ETL

Outline and Physical Dimensions of GMV-ND36PHS/B-T(U).



Unit:mm(in.)

